

CLEAN BATHROOMS

D-BOX



576 Bd Industriel, Saint-Eustache, QC, J7R 5V3 T. 1 855 550-0303
info@niutoilet.com www.niutoilet.com



ABOUT US

NIU Automated Toilet Facilities is the latest division of Comac Corporation specializing in the manufacturing of intelligent hand dryers in North America. Our goal is to create the perfect intelligent self-cleaning bathroom with the largest efficacy at the lowest cost.

To do so, we have brought together the best engineers to create the world's first revolutionary intelligent bathroom that meets the demands of today and tomorrow.

NIU's intelligent bathrooms are designed with one goal in mind:

comfort, security and innovation.

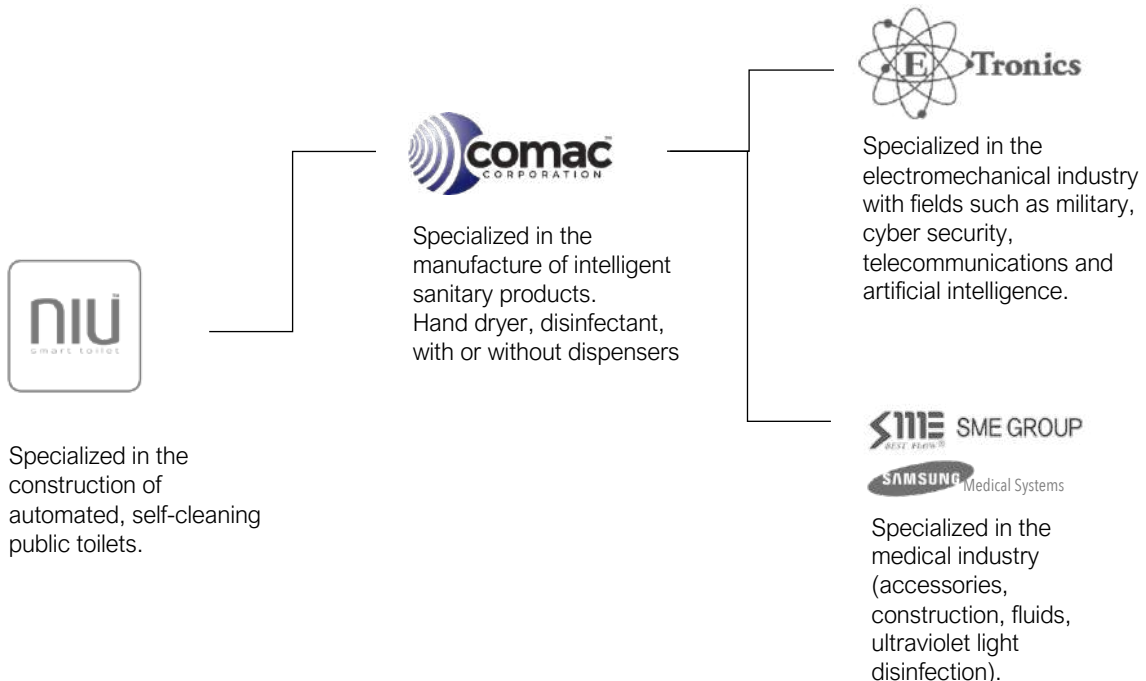
To understand who we are; Comac Corporation is a Canadian company established in Quebec since 1984. Comac is the Canadian leader in intelligent hand dryers (such as the B.L.A.S.T. or the ONE...).



NIU Toilettes and Comac Corporation benefit from the know-how of its sister companies SME GROUP, which works in equipment for hospitals such as ultraviolet light disinfection, and E-Tronics, which designs and manufactures electronic boards for customers such as Bombardier.

We use the know-how of our sister companies in order to be able to offer the best current techniques for the disinfection of our units.

All our NIU Toilettes products are designed and manufactured in Canada.



— **CONCEPT**

We have the solution to your hygiene problems:

- Prefab insulated building with Steel structure
- Walls made of composite materials of railway and medical grade treated anti-graffiti.
- Systematic disinfection system by ULV-C after each user.
- Washbasin with a contactless faucet and hand dryer
- Easy to install
- Plug and play





STRUCTURE

Our sanitary blocks are prefabricated in the factory; they are made of self-supporting steel structures. All our constructions meet the Construction Code of Canada, Quebec and the United States.

The welded steel structure of our sanitary block is manufactured in our workshop and is treated against corrosion. This type of structure allows us to have a lighter building, which gives us greater flexibility in moving our units. We use an epoxy projection for the buried parts in order to extend the life of the building.

Our buildings are insulated mainly with sprayed soy urethane to meet the insulation standards of the various building codes; it is a technique that has proven itself today. The walls are R-25 and the ceiling is R-41.

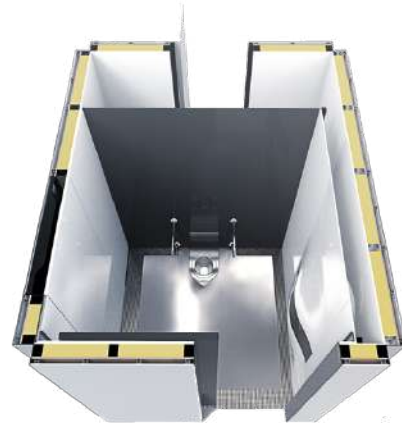
All secondary components such as plumbing, and electricity are made with certified components that meet current standards.

In an environmental concern, we build in an eco-responsible manner; to do so, we use local suppliers and subcontractors to have a minimum impact on the movement of materials and stakeholders. Comac Corporation is proud of its LEED certification.

Our units meet the requirements for people with reduced mobility.

We customize the exteriors of your units at your convenience through the choice of materials or complete aesthetics with different types of roofs.

Facade cladding in wood, stone, aluminum, slate, acrylic or other. Different types of roofs; flat roof, 4 slope roof, one slope or other. We work in collaboration with your architects, engineers or other urban services.



CABINE

The design of our cab is modelled on those used in trains to offer the same quality and durability. These cabs are designed to resist vandalism.

We use a fire-resistant composite that is used in aviation and railroad environments; it is solution-stained and has an anti-graffiti treatment.

A changing table can be installed as an option.

The lighting is LED in order to provide an atmosphere but also to save energy.



Interior finishing is for example



NIU ENGINEERING

We claim to have the most technologically and hygienically advanced toilets on the market.

After each user you have a systematic disinfection system by ULV-C and optional with UV-C Light. Fogging can apply disinfectant to large spaces including high contact areas, lowering the chance germs will spread between persons.

This UV-C technique is mastered by our sister company SME GROUP which manages this system for hospital disinfection.

The cabin lighting changes to UV-C light to start the room disinfection.

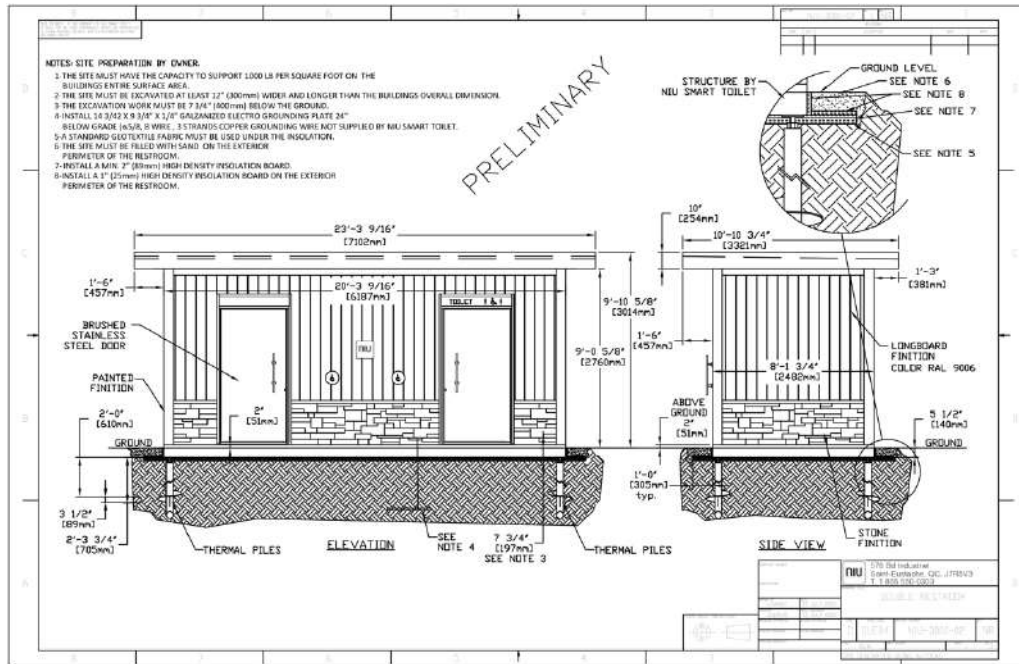


Washbasin with the dual tap as a contactless faucet and a hand dryer in the same product.



PREPARATION

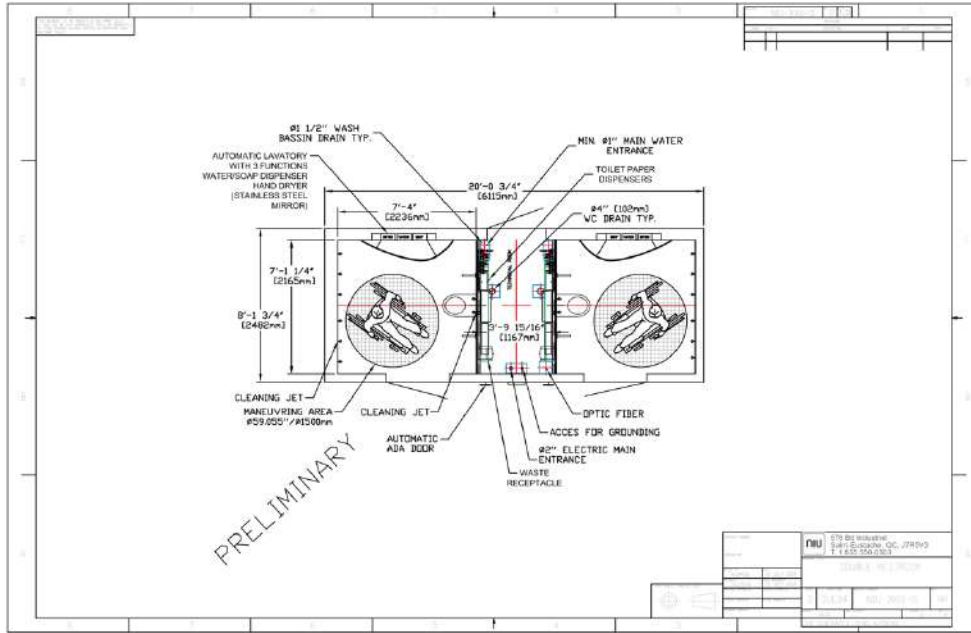
In order to prepare the site of the installation correctly, we provide you with the plans of the services: electricity, internet, water and sewer. The use of pile foundations greatly shortens the preparation time. Here is an example of a plan provided for the installation of a double unit :



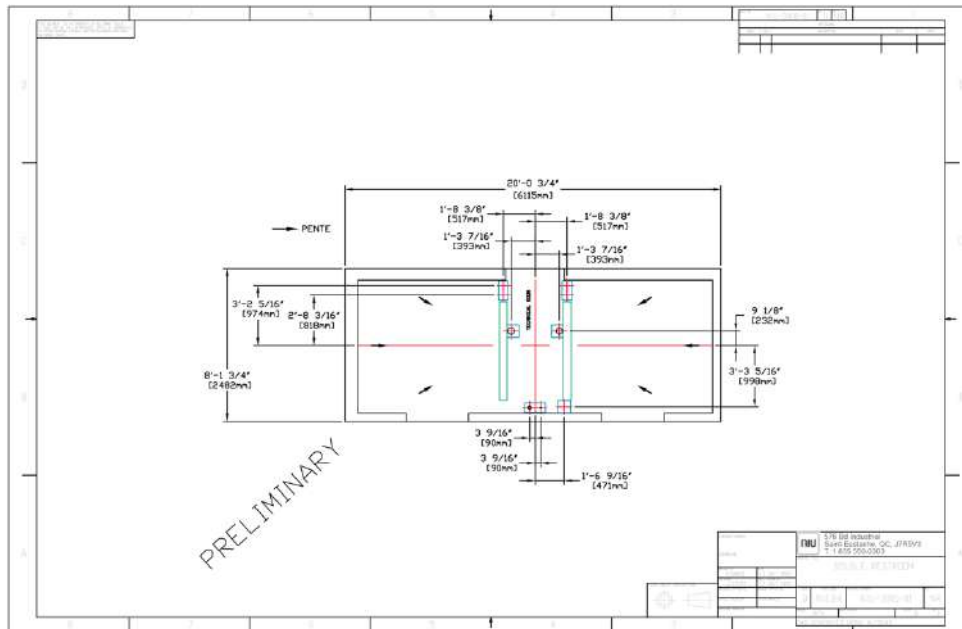
Front view of the facades and floor section



Example of the arrival of services before installation



Plan view of the unit's functions and services



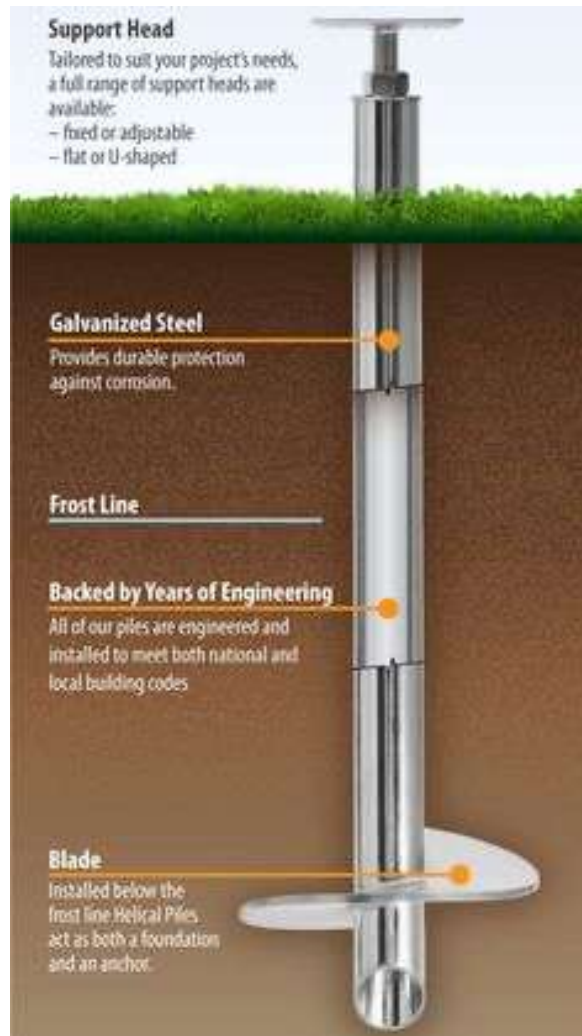
Plan view of the implementation of services

The self-supporting prefabricated design guarantees low construction costs, but above all allows for simplified and inexpensive installation on hydraulic screw piles (a guaranteed technique that has proven itself today).

We use this modern technique which allows a fast, inexpensive installation and does not require any site preparation. The screw piles are designed to support compressive, tensile and lateral loads. The choice of the diameter of the tube and the diameter of the fin depends on the bearing capacity of the soil and the loads applied to the pile. capacity

The piles are insulated by injecting a polyurethane-based insulating foam into the metal tube. This system prevents the circulation of cold outside air in the tube, thus avoiding the formation of ice or frost at the base of the pile, which offers optimal protection against movement caused by frost.

The companies we work with use all certified materials.



TRANSPORT & INSTALLATION



Before departure, protect the unit to avoid damage during transport, loading and delivery.

The installation of the unit is done with the help of a crane and members of our team. Service connections are made by a local electrician and plumber.

This work takes less than a day; the toilet can be put into operation immediately if the local amenities provide access to users.

Product training is given on site by one of our team members who will explain all the functions of the toilet and the minimum maintenance required.